

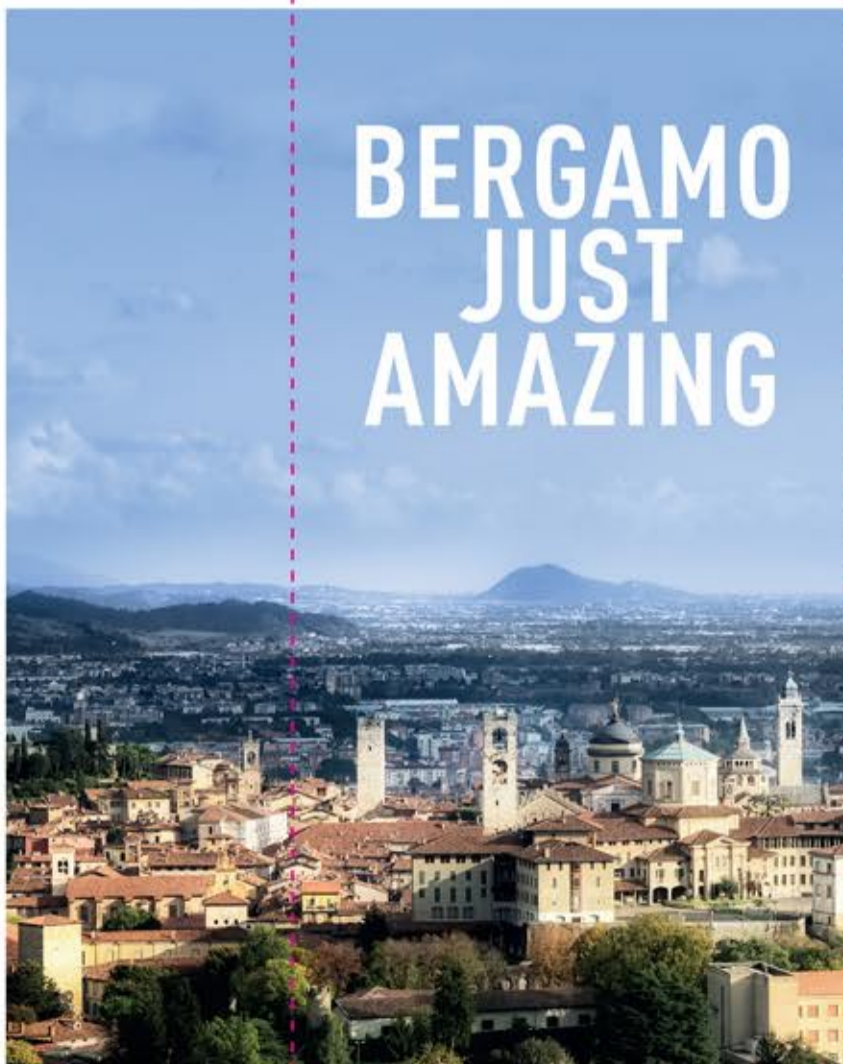
- MUST SEE SIGHTS**
- 1. A. Mai Library
 - 2. Palazzo della Ragione
 - 3. Cathedral
 - 4. Cathedral Museum and Treasury
 - 5. S. M. Magiore Basilica
 - 6. Collored Chapel
 - 7. Baptistery
 - 8. San Giacomo Gate
 - 9. Sant'Agostino Gate
 - 10. Sant'Assandro Gate
 - 11. San Lorenzo Gate (for Caribaldi)
 - 12. S. Giovanni Casemate
 - 13. S. Michele Casemate
 - 14. Lantro Fountain
 - 15. Accademia Carrara
 - 16. Gabetic
 - 17. Adriano Bernareggi Museum
 - 18. Funicular
 - 19. San Vigilio Funicular
 - 20. Bergamo from up high
 - 21. San Vigilio Castle
 - 22. Fortress of Bergamo
 - 23. Civic Tower
 - 24. Gombito Tower
 - 25. Torre del Caduti (Memorial Tower)
 - 26. Parco del Coll
 - 27. Ex Astino Monastery
 - 28. L. Rota Botanical Garden Bergamo
 - 29. Biodiversity Valley
 - 30. Music in Bergamo
 - 31. Sociale Theatre (Info Point)
 - 32. Birthplace Caetano Donzetti
 - 33. Donzetti Museum
 - 34. Donzetti Theatre
 - 35. Info Point
 - 36. Shopping
 - 37. Train Station
 - 38. Nightlife
 - 39. Funicular
 - 40. Camper area
 - 41. Storage
 - 42. Luggage
 - 43. Bus line
 - 44. Wi-Fi Area
- The Venetian Walls surrounding the Old Town of Bergamo have become Unesco - World Heritage Site since July 2017. They are part of the transitional site called "Venetian Works of Defence between the 15th and 17th centuries: Stato da Terra - western Stato da Mar".



Visit Bergamo

An Italian masterpiece

BERGAMO JUST AMAZING



visitbergamo.net
info@visitbergamo.net



HOW TO GET TO BERGAMO:

Bergamo is located in the heart of northern Italy, a strategic and ideal location to discover all of Lombardy, the lake region and the cities of the north. In an hour you can reach the main tourist areas of the region, Bergamo is 40km from Milan, Brescia and Como, 30km from Lake Iseo, 80km from Lake Garda, 110km from Verona and 220km from Venice.

The Milan - Bergamo international airport is connected with over 130 destinations and is the third largest airport in Italy in terms of number of passengers. It is located just 5km from the city centre. It offers fast and frequent connections to Bergamo, Milan and Brescia.

The "Bergamo" exit of the A4 Milan - Venice highway allows you to directly reach the city centre.

By train from Bergamo you can reach Milan, Brescia or Lake Como (Lecco station) in an hour.

HOW TO GET AROUND BERGAMO:

The city is people-friendly and is crossed by a dense transport network. Take advantage of tourist tickets for unlimited travel on funiculars and buses throughout the city. Find all the information on www.atb.bergamo.it. NB: Upper Bergamo and the centre of Lower Bergamo are limited traffic areas.

To move around the province of Bergamo, visit www.bergamotrasporti.it.

Find all the timetables for connections to reach the spa towns, some of the most beautiful towns in Italy, the ski resorts, the lakes, the plain and the Orobic mountains.

Taxi service: tel +39 0354519090 or www.radiotaxibergamo.it.



INFO POINTS:

Milano - Bergamo International Airport Arrival area
Tel. +39 035 320402
airport@visitbergamo.net

Info point - Lower Town
Piazzale Marconi (BG)
Tel. +39 035210204
turismo1@comune.bg.it

Infopoint - Upper Town
Tel. +39 035242226
turismo@comune.bg.it

Visit Bergamo

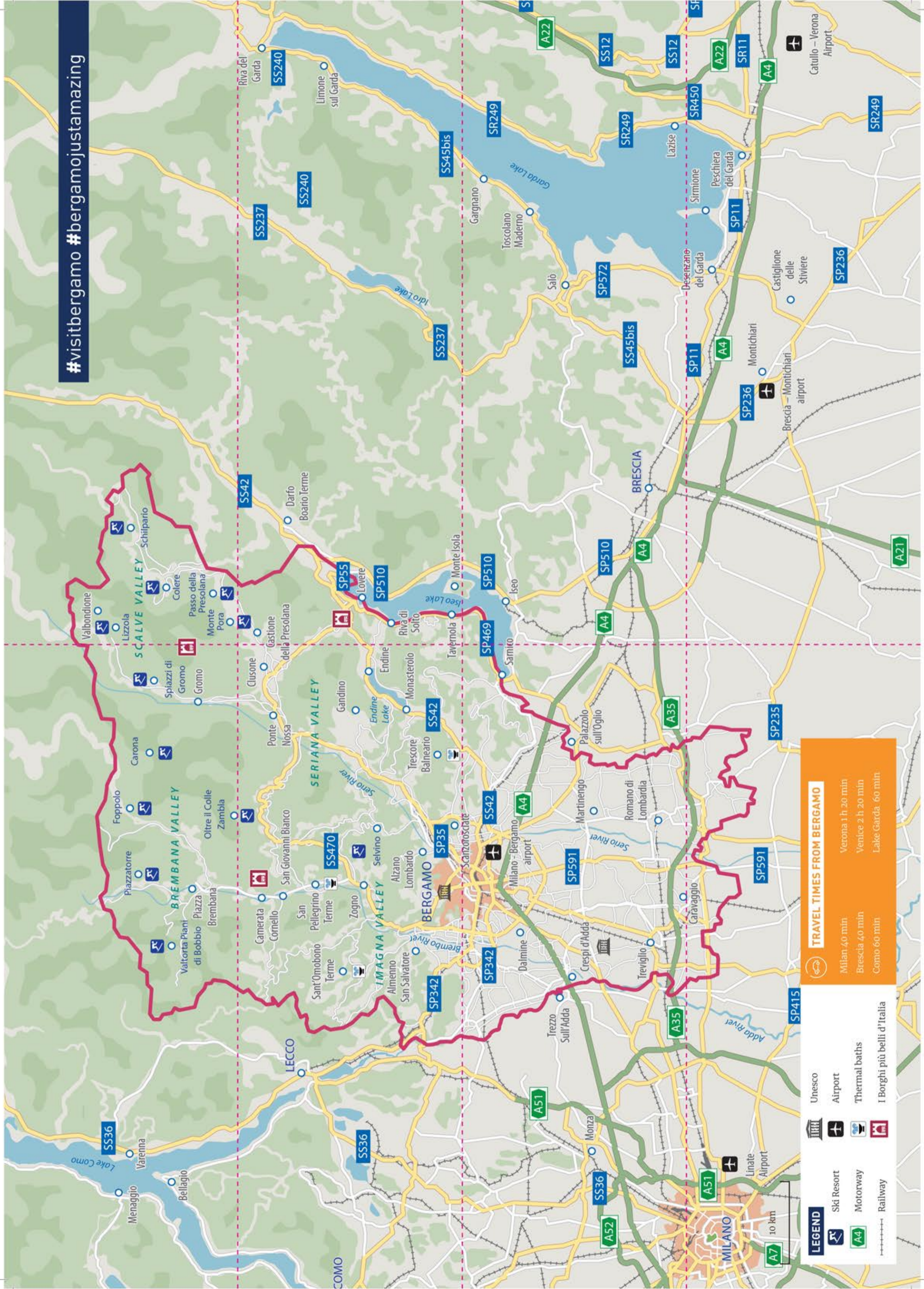
Before, during and after your visit, stay connected to Bergamo! Visit the official tourism portal:

www.visitbergamo.net
info@visitbergamo.net



Enjoy and Share! #visitbergamo

#visitbergamo #bergamojustamazing



TRAVEL TIMES FROM BERGAMO

Milan 40 min	Verona 1 h 20 min
Brescia 40 min	Venice 2 h 20 min
Como 60 min	Lake Garda 60 min

LEGEND

- UNESCO
- Ski Resort
- Motorway (A4, A51, A52, A35)
- Railway
- Airport
- Thermal baths
- I Borghi più belli d'Italia