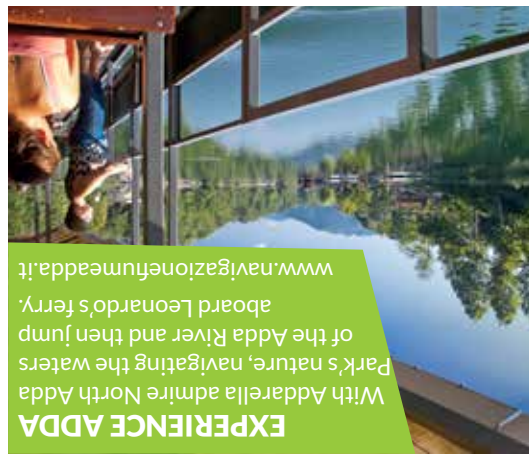


**IN THE FOOTSTEPS OF POPE JOHN**  
A journey of faith in the midst of nature: the one made every day by Angelo Roncalli to go to Celana College  
[www.isolabergamasca.org](http://www.isolabergamasca.org)



**EXPERIENCE ADDA**  
With Addarella admire North Adda Park's nature, navigating the waters aboard Leonardo's ferry.  
[www.navigazionefiumeadda.it](http://www.navigazionefiumeadda.it)



**AROMAS AND FLAVOURS OF BERGAMO ISLAND**  
The Island is a land full of goodness: polenta, wine and craft beer, honey and jams, cheeses, meat.  
[www.isolabergamasca.org](http://www.isolabergamasca.org)



**DOWNLOAD THE APP!**  
With the Visit Bergamo Island App the island's treasures are at your fingertips: culture, nature, religion, art, food and wine.



**FUN FOR THE FAMILY**  
Fun is guaranteed at the Leolandia theme park, with attractions, games and shows! For children interested in space, we recommend the Torre del Sole astronomical observatory and if you want to know about the importance of wood throughout history, visit the Tino Sana Museum of Carpentry.  
**8**



**SCIENCE SIGHTS**  
On Bergamo Island we go hunting... for science treasures! The ferry on the river at Villa d'Adda boasts a design by Renaissance genius Leonardo da Vinci. And if you head to Calusco d'Adda, you'll find the iron San Michele Bridge, reminiscent of a horizontal Eiffel Tower.  
**7**



**NATURE AND PARKS**  
Discover the paths around Monte Canto either on foot or by mountain bike, stroll through the parks accompanied by the flowing Adda and Brembo rivers and stop off at the Alberrone Oasis for a bit of birdwatching. Experience the Island's natural beauty.  
**6**



**ROMANESQUE SIGHTS**  
A land crossed by religious pilgrims, wayfarers and clerics, Bergamo Island boasts several jewels of Romanesque architecture. Geometric rigor, exposed stone and frescoes depicting saints and knights characterise the Island's Romanesque churches.  
**5**



**VILLAS AND CASTLES**  
Walks around Bergamo Island wind through medieval manors, Renaissance villas and eighteenth-century residences. A special mention goes to the Solza Castle, the birthplace of one of the fifteenth century's most famous leaders: Bartolomeo Colleoni!  
**4**



**TRADITIONAL FLAVOURS**  
The flavours tell the story of the land. From the local Bergamo Island corn, a rustic variety of flour excellent for polenta, to the goat and cow cheeses or tender meats and cured meats, honey and jams that speak to you about the Island. And let's not forget the Valcalepio DOC wine and craft beer.  
**3**



**SOTTO IL MONTE JOHN XXIII**  
Sotto il Monte is not only the birthplace of Pope John XXIII, but also proudly bears witness to the Sanctuary dedicated to him, the Peace Garden and other various places of interest from his life that are dotted around this small village.  
**2**



**CRESPID'ADDA - UNESCO WORLD HERITAGE**  
Along the streets and among the buildings, stories resonate of the families who were born and lived in this late 19th century workers' village in Crespi d'Adda. A unique social experiment within Italy, that merited UNESCO World Heritage status.  
**1**

Enjoy and Share!

Facebook, Twitter, Instagram, YouTube icons

#visitbergamo

PROMOISOLA logo

isola bergamasca logo

MAIS.isola logo

Regione Lombardia logo

Provincia di Bergamo logo

\*Iniziativa realizzata nell'ambito del bando Wonderfood & Wine di Regione Lombardia e Unioncamere Lombardia per la promozione di Sapore in LOMBARDIA\*



visitbergamo.net  
info@visitbergamo.net

in LOMBARDIA logo

GB  
**Visit Bergamo**  
An Italian masterpiece

**BERGAMO ISLAND**

**HOW TO GET THERE**

**BY PLANE**  
Orio al Serio Airport - Bergamo  
From the airport take ATB bus line 1 to Bergamo's bus station and then either Locatelli Autoservizi line A or Z to the various locations around Bergamo Island, ATB line 8.

**BY CAR**  
• Highway A4 Milan - Venice exits: Capriate San Gervasio - Dalmine  
• Highway A35 Brescia - Bergamo - Milan exits: Treviglio

**BY TRAIN**  
**From Bergamo**  
• via Carnate Usmate for Milan, stopping at Ponte San Pietro, Terno d'Isola and Calusco d'Adda

**From Brescia**  
• via Carnate Usmate for Milan, stopping at Ponte San Pietro, Terno d'Isola and Calusco d'Adda

**From Milano**  
• via Carnate Usmate for Bergamo, stopping at Calusco d'Adda, Terno d'Isola and Ponte San Pietro

**ADDA RIVER NAVIGATION AND BIKE RENTAL**  
In Adda  
Piazza Leonardo Da Vinci  
23898 Imbersago (Lc)  
+39 3922999771  
addarella@gmail.com  
www.navigazionefiumeadda.it

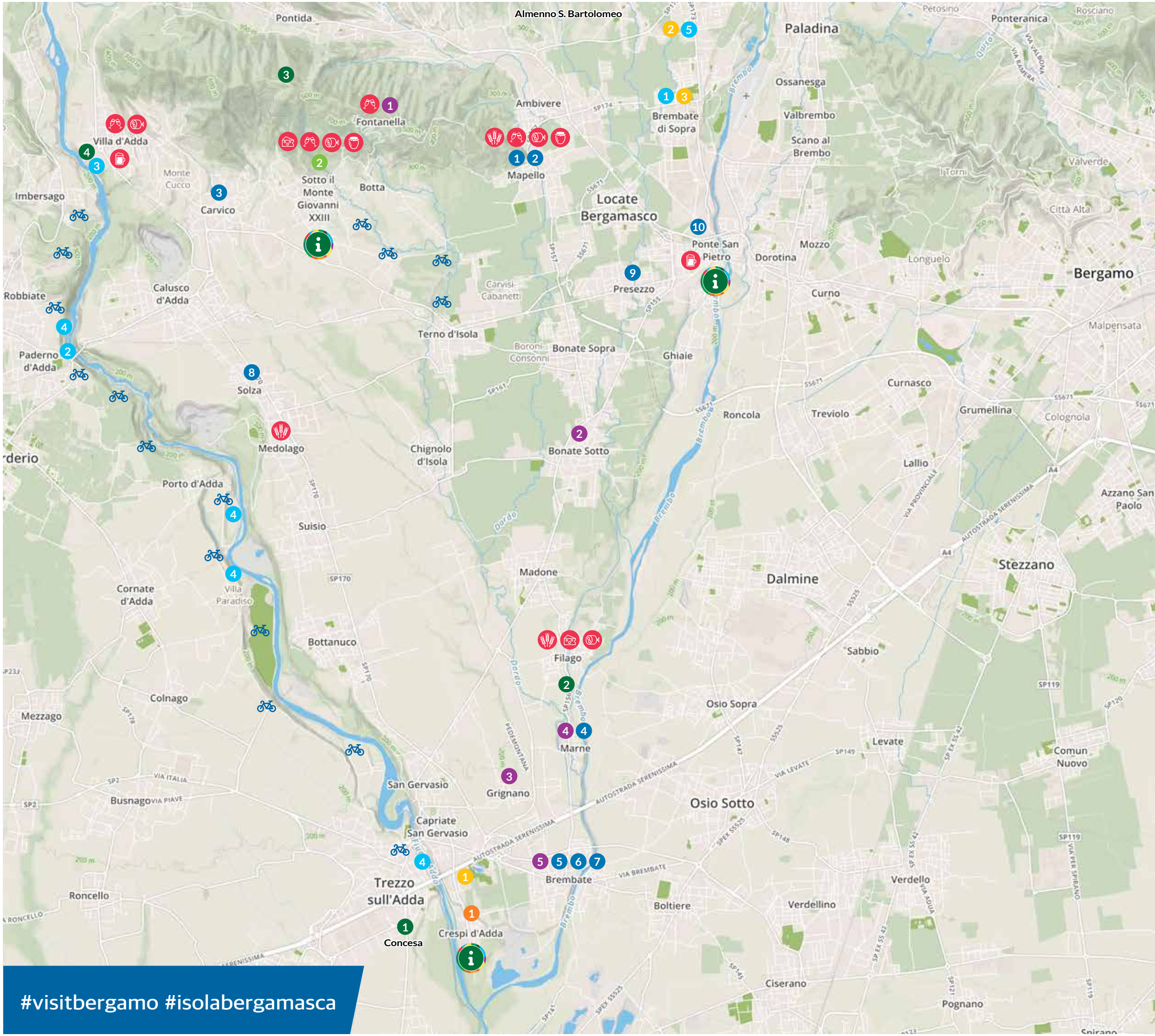
**INFO POINT**  
**PROMOISOLA ASSOCIATION**  
Via Legionari di Polonia, 5 - 24036 Ponte San Pietro  
tel. +39 334 1711234  
promoisola@isolabergamasca.com  
[www.isolabergamasca.org](http://www.isolabergamasca.org)

**INFO POINT SOTTO IL MONTE JOHN XXIII BERGAMO ISLAND**  
Via IV novembre, 1 - Sotto il Monte  
tel. +39 334 1711234  
info@iatsottoilmonite.it  
[www.iatsottoilmonite.it](http://www.iatsottoilmonite.it)

**INFO POINT CRESPI D'ADDA**  
Corso Manzoni c/o l'edificio Ex Scuole S.T.I.  
Tel. +39 334 1090138  
info@crespidaddaunesco.org  
[www.crespidaddaunesco.org](http://www.crespidaddaunesco.org)

**BERGAMO ISLAND IS THE TRIANGLE OF LAND ENCLOSED BY THE ADDA AND BREMBO RIVERS AND THE SLOPES OF MONTE CANTO.**





**MUST SEE SIGHTS**

**1. CRESPI D'ADDA - UNESCO WORLD HERITAGE**

**2. SOTTO IL MONTE JOHN XXIII**

**3. TRADITIONAL FLAVOURS**

- Local Island Corn
- Cheeses
- Wine
- Fresh and cured meats
- Honey and jams
- Craft beer

**4. VILLAS AND CASTLES**

- 1** Villa Gromo - Mapello
- 2** Villa Martinelli - Mapello
- 3** Villa Acquaroli - Carvico
- 4** Marne Castle
- 5** Villa Tasca - Brembate
- 6** Moretti Castle - Brembate
- 7** Villa Morlacchi - Brembate
- 8** Solza Castle
- 9** Palazzo Furietti Carrara - Presezzo
- 10** Villa Mapelli Mozzi - Ponte San Pietro

**5. ROMANESQUE SITES**

- 1** S. Egidio Abbey - Fontanella
- 2** Church of S. Giulia - Bonate Sopra
- 3** Church of Ss. Fermo and Rustico - Grignano
- 4** Church of San Bartolomeo - Marne
- 5** Church of S. Vittore - Brembate

**6. NATURE AND PARKS**

- 1** North Adda Park
- 2** Lower Brembo Park
- 3** Monte Canto and Bedesco
- 4** Alberone Oasis

**7. SCIENCE SITES**

- 1** La Torre del Sole Astronomical Observatory - Brembate di Sopra
- 2** San Michele Bridge - Paderno d'Adda
- 3** Leonardo Ferry - Villa d'Adda
- 4** Hydroelectric power plants along the Adda River
- 5** Tino Sana Museum of Carpentry - Almenno S. B.

**8. FUN FOR FAMILY**

- 1** Leolandia - Capriate S. Gervasio
- 2** Tino Sana Museum of Carpentry - Almenno S. B.
- 3** La Torre del Sole Astronomical Observatory - Brembate di Sopra

**LEGEND**

- Info point
- Cycle path

#visitbergamo #isolabergamasca